

## HEAVY-DUTY HIGH PERFORMANCE PUMPS

## PM60 HEAVY-DUTY SERIES

02

GREASE PUMPS

Very high pressure and high volume delivery double acting pump for use in applications that require extra pressure and volume output and where cold temperatures or low air pressure could limit pump performance. Pumps can be used with grease up to NLGI-2 viscosity. These pumps can be used in large distribution systems that include simultaneous operation outlets.

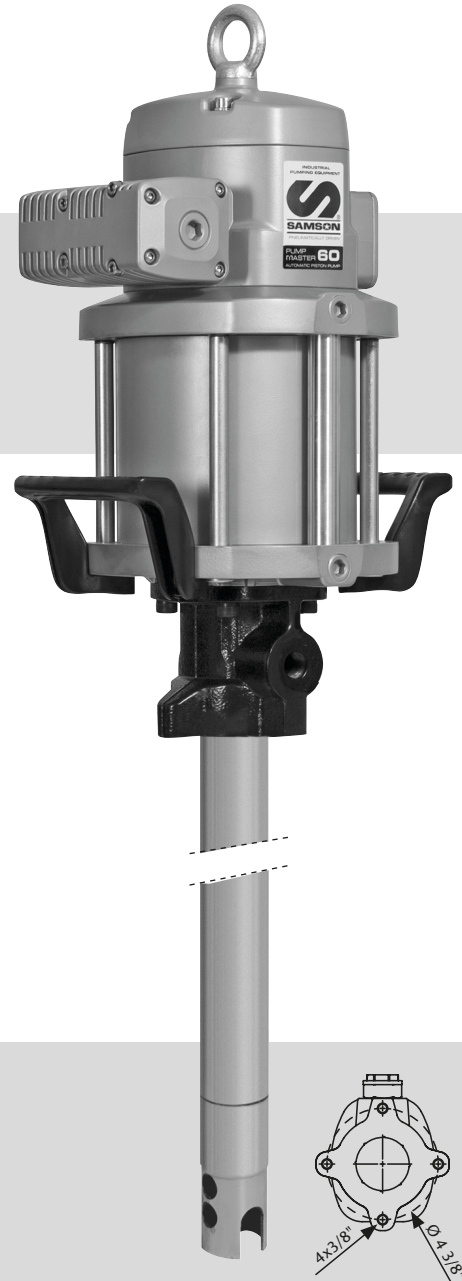
Pumps are available for cover mount to 120 lb (50 kg) and 400 lb (185 kg) open drum and for side mount on grease totes.

### FLUIDS HANDLED

- Grease up to NLGI-2.

### MARKETS SERVED

- Mining and construction.
- In-plant.
- Railroad and mass transit.
- Lube trucks.
- Fleets.



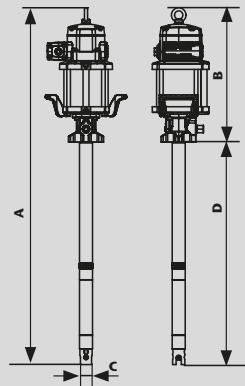
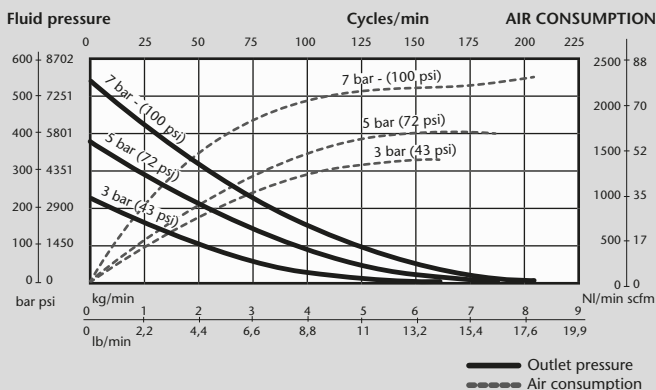
MODELS		
PART No.	APPLICATION	WEIGHT
532 811	400 lb (185 kg) drum, flange mounted	60 lb (27 kg)
532 821	120 lb (50 kg) drum, flange mounted	53 lb (24 kg)

TECHNICAL DATA	
Pump ratio	80:1
Continuous duty flow rate	5.5 lb/min (2,5 kg/min)
Maximum free flow	17.6 lb/min (8 kg/min)
Air pressure operating range	20 - 100 psi (1,5 - 7 bar)
Maximum outlet pressure	8,000 psi (560 bar)
Air motor effective diameter	6" (150 mm)
Air motor stroke	4" (100 mm)
Air consumption (1)	35 scfm (1.000 NI/min)
Air inlet	1/2" NPTF
Fluid outlet	1/2" NPTF
Wetted and seal materials	Cast Iron / Steel / Hard chromed steel / UHMW PE / NBR / PTFE
Noise level (2)	80 dB
Manual	853 819

(1) Air consumption at 70 bar (5 bar) air pressure, NLGI-2 grease at 68 °F (20 °C) and 60 cpm.  
 (2) Noise level measured at 3' (1 m) from the pump, 100 psi (7 bar) air pressure and free delivery.

### NLGI-2, 70 °F (21 °C) CAPACITY CURVE



DIMENSIONS Inches - (mm)			
PART No.	532 811	532 821	
A	53 1/2" (1.371)	45 1/2" (1.166)	
B	20" (516)	20" (516)	
C	2" (50)	2" (50)	
D	33 1/2" (855)	25 1/2" (650)	