

# PUMPMASTER 60 - 12:1 RATIO OIL PUMP

## PM60 HEAVY-DUTY SERIES

### HEAVY-DUTY HIGH PERFORMANCE PUMP

Double acting air operated moderate pressure and high delivery pump for very large installation with simultaneous operation outlets or when low air pressure or low temperatures would limit pump performance. Built in port for optional (PN 609 008) pressure relief valve. **Flange mounted pump.**



#### PRODUCTS HANDLED

- Synthetic and mineral based oil.
- Hydraulic oil.
- Gear lube.
- Transmission fluid.

#### MARKETS

- Very large auto and truck dealers.
- Construction equipment maintenance.
- Mining equipment maintenance.
- Large fleets.
- Railroad and mass transit maintenance.
- Marine.
- In plant oil distribution.

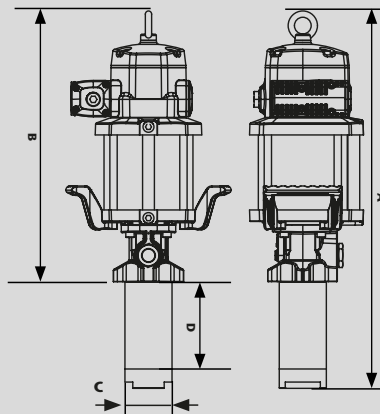
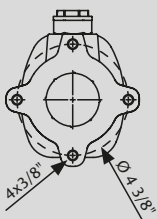
| MODELS   |                                     |                 |
|----------|-------------------------------------|-----------------|
| PART No. | APPLICATION                         | WEIGHT          |
| 537 131  | Universal stub pump. Flange mounted | 41.9 lb (19 kg) |

| TECHNICAL DATA PRESSURE RATIO 12:1 |   |
|------------------------------------|---|
| Air pressure operating range       | 20 to 170 psi (1,5 to 12 bar)                               |
| Air consumption (1)                | 41 scfm (1.150 NI)  |
| Maximum fluid outlet pressure      | 2,040 psi (144 bar)   |
| Air motor effective diameter       | 6" (150 mm)   |
| Air motor stroke                   | 4" (100 mm)   |
| Delivery at 60 cpm                 | 5.3 gal/min (20 l/min)                                      |
| Maximum free flow delivery         | 17 gal/min (65 l/min)                                       |
| Air inlet                          | 1/2 " NPTF  |
| Fluid inlet                        | 1 1/2" NPTF   |
| Fluid outlet                       | 3/4" NPTF   |
| Wetted and seal materials          | Cast iron / Hard chromed steel / Steel / Polyurethane / NBR |
| Noise level (2)                    | 80 dB   |
| Manual                             | 853 818   |

| DIMENSIONS Inches - (mm) |               |
|--------------------------|---------------|
| PART No.                 | 537 131       |
| A                        | 28 1/2" (716) |
| B                        | 20 1/4" (516) |
| C                        | 2 3/4" (70)   |
| D                        | 8" (200)      |

(1) Maximum air consumption with 72 psi (5 bar) air inlet pressure and 60 cpm.

(2) Maximum noise level measured at 3' (1 m) from the pump, 100 psi (7 bar) air pressure and free delivery.



#### SAE 10, 70 °F (21 °C) CAPACITY CURVE

